

**ELKAY**<sup>®</sup>

commercial  
products

A Family of Fountains  
Designed Specifically  
For Outdoor Installations

Discover the  
professional's choice.<sup>™</sup>

## Outdoor Drinking Fountains



Elkay Outdoor Drinking Fountains are specifically designed for school campuses, playgrounds, golf courses, parks, campgrounds and recreational areas. Vandal-resistant features and durable, weather-resistant finishes help ensure years of service. Select from decorative stone aggregate and sleek tubular steel single, bi-level and multi-station units, including many ADA Compliant models.

## STONE AGGREGATE DRINKING FOUNTAINS

### Standard Features

- Attractive weather-resistant stone aggregate
- Stainless steel basin
- Chrome-plated exposed fittings
- Vandal-resistant bubbler
- Rust-resistant stainless steel access door with vandal-resistant screws



**LK4590**  
Barrier-Free Stone Pedestal Fountain

- Meets requirements of ADA
- Size: 12 3/4" W x 29 5/8" D x 36" H to bubbler
- Available with freeze-resistant valve system (LK4590FR)
- Available with sanitary freeze-resistant valve system (LK4590SFR)



**LK4595**  
Barrier-Free Stone Pedestal Fountain with Two Basins

- Extended basin meets requirements of ADA
- Size: 12" W x 31" D x 36" H to lower bubbler
- Available with freeze-resistant valve system (LK4595FR)
- Available with sanitary freeze-resistant valve system (LK4595SFR)



**LK4591**  
Upright Stone Pedestal Fountain

- Size: 17" W x 14" D x 35 1/4" H



**LK4593**  
Barrier-Free Stone Wall-Mount Fountain

- Meets requirements of ADA
- Size: 12 7/8" W x 19" D x 9" H
- Available with freeze-resistant valve system (LK4593FR)





## TUBULAR STEEL DRINKING FOUNTAIN ACCESSORIES



### 97887C

#### Non-Locking Hose Bib

This kit will modify LK4400 Series Pedestal Fountains to provide the added ability to connect garden hoses or fill pails in outdoor applications. Ideal for golf courses, ball parks, and swimming pools for irrigation purposes.



### 97889C

#### Locking Hose Bib

Same as a Hose Bib Kit but with a panel and a door that can be secured with a standard padlock (not included) to minimize tampering.



### 97890C

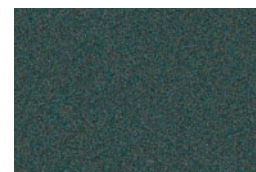
#### Direct Bury Kit

Makes rough-in and installation easier for all models of non-freeze resistant tubular fountains. Opening in adaptor allows for simplified routing of water supply and drain into the fountain body. 3/4" rods provide added stability.

**Now Available  
In 16 Colors!**

## Tubular Steel Drinking Fountains Color Options

Elkay Tubular Steel Drinking Fountains are now available in a choice of 16 colors! In addition to standard textured evergreen, choose from 15 new colorful options all with a textured river finish.



Evergreen



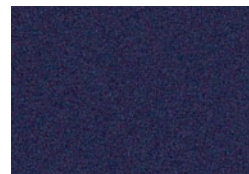
Moss



Slate



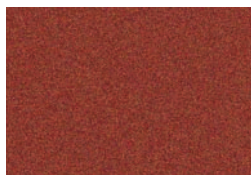
Blue



Navy



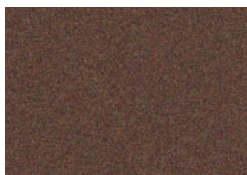
Purple



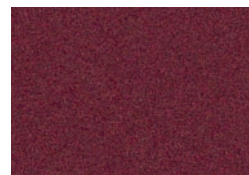
Terracotta



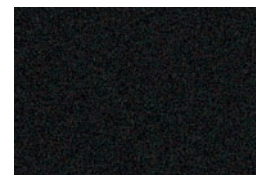
Red



Brown



Maroon



Black



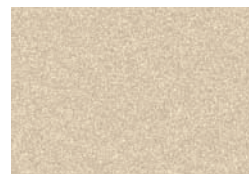
Orange



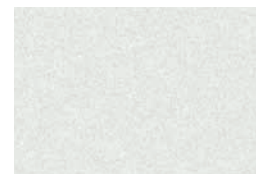
Yellow



Gray



Beige



Neutral



### Contact Information

Web Site: [elkayusa.com](http://elkayusa.com)  
 Corporate Headquarters:  
 630.574.8484  
 Customer Service: 630.572.3192  
 Fax: 630.574.5012

2222 Camden Court  
 Oak Brook, Illinois 60523

© 2010 Elkay  
 Printed in U.S.A. (2/10)  
 F-4305